

# STEREOTYPE SMASHER

**BREAK THROUGH  
-CARDS-**

What percentage of women globally hold managerial positions as of the earliest data?

- A) 25 %
- B) 33 %**
- C) 40 %
- D) 50 %

True or False: Globally, women earn on average less than men for work of equal value.

- A) True**
- B) False

Which term refers to hidden biases about genders at work?

- A) Explicit bias
- B) Allocative discrimination**
- C) Pay gap
- D) Presenteeism

What's the global initiative aimed at achieving gender equality by 2030?

- A) Paris Agreement
- B) SDG 5**
- C) HeForShe
- D) MeToo

On average, in the EU, what fraction of time do women spend on unpaid care versus men?

- A) women 20% vs men 17%
- B) 19.5% vs 7.6%**
- C) 15% vs 5%
- D) 34% vs 16%

In the EU, which country ranks highest in gender equality per the 2022 index?

- A) Norway
- B) Germany
- C) Sweden**
- D) France

As of 2024, how many years longer do women tend to work than men in Italy?

- A) 2 years
- B) 4.3 years**
- C) 6 years
- D) 8.9 years

In corporate boards: approx what % of seats in Sweden are held by women?

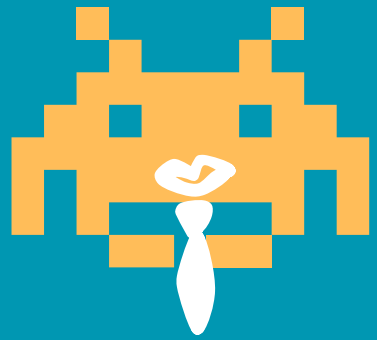
- A) 15 %
- B) 29 %**
- C) 40 %
- D) 50 %

In the EU, what percentage of women work part-time compared to men?

- A. W ~28%, M ~8%**
- B. W ~40%, M ~20%
- C. W ~15%, M ~5%
- D. W ~60%, M ~30%

Which country is known for nearly 74 % of women being employed, above OECD average?

- A) Sweden
- B) Norway
- C) Finland
- D) Sweden (Nordic average)**



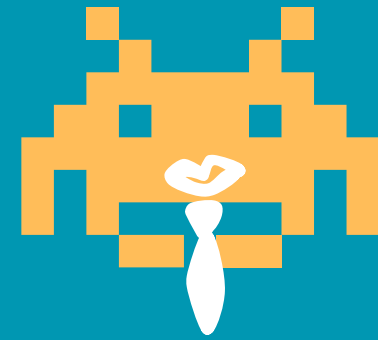
**BREAK THROUGH**



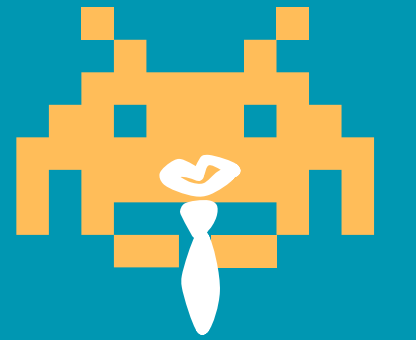
**BREAK THROUGH**



**BREAK THROUGH**



**BREAK THROUGH**



**BREAK THROUGH**



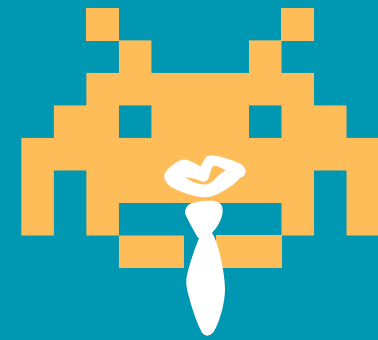
**BREAK THROUGH**



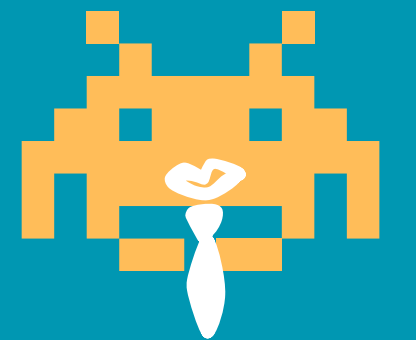
**BREAK THROUGH**



**BREAK THROUGH**



**BREAK THROUGH**



**BREAK THROUGH**

In Sweden, women earn approximately what share of men's average monthly salary?

- A) 80 %
- B) 90 %**
- C) 100 %
- D) 110 %

Sweden held what rank in the EU Gender Equality Index with a score of 83.9/100?

- A) 1st**
- B) 2nd
- C) 3rd
- D) 4th

What % of workers in Sweden's energy sector are women (2022)?

- A) 22 %
- B) 29 %**
- C) 40 %
- D) 50 %

In Sweden, what percent of transport sector workers are women?

- A) 22 %**
- B) 29 %
- C) 35 %
- D) 45 %

As of 2024, approx what % of national parliament seats in Sweden are held by women?

- A) 40 %
- B) 45 %
- C) 47 %**
- D) 50 %

In Italy (2024), what percent of women of working age are employed vs men?

- A) 51 % vs 69 %**
- B) 60 % vs 80 %
- C) 40 % vs 50 %
- D) 70 % vs 90 %

As of 2024, what percentage of managers in Italy are women?

- A) 28 %
- B) 36 %**
- C) 44 %
- D) 50 %

What is the overall average wage gap for women in Italy as of 2024?

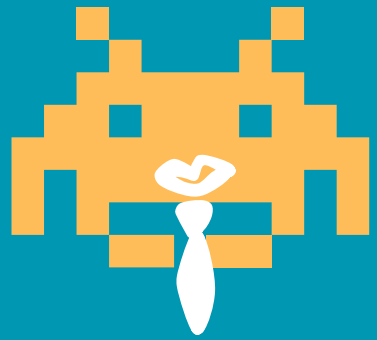
- A) 5 %
- B) 7 %
- C) 10.7 %**
- D) 20 %

In Italy, what % of domestic unpaid care time do women dedicate compared to men?

- A) W 7.6 % vs M 19.5 %
- B) W 19.5 % vs M 7.6%**
- C) W 10 % vs M 5 %
- D) W 25 % vs M 10 %

Which Italian city is famous for hosting a carnival where people wear elaborate masks?

- A) Venice**
- B) Rome
- C) Naples
- D) Milan



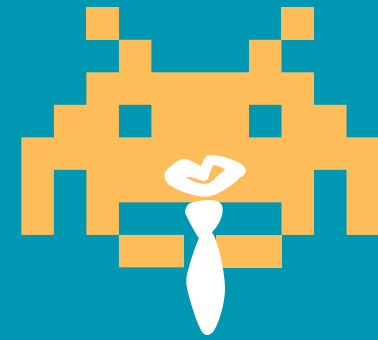
**BREAK THROUGH**



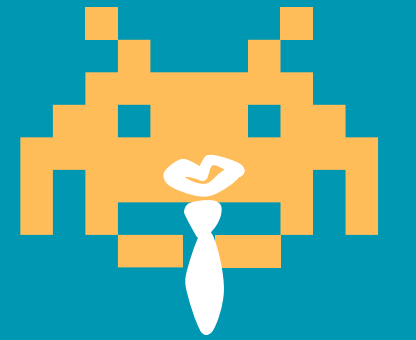
**BREAK THROUGH**



**BREAK THROUGH**



**BREAK THROUGH**



**BREAK THROUGH**



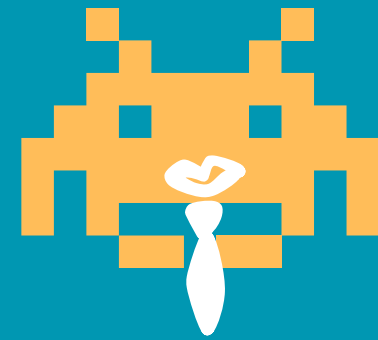
**BREAK THROUGH**



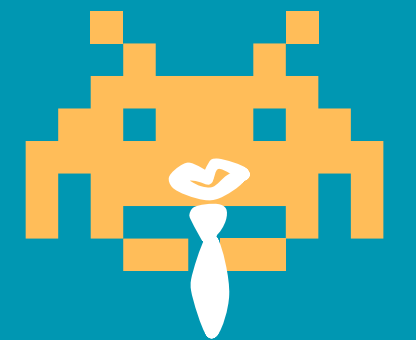
**BREAK THROUGH**



**BREAK THROUGH**



**BREAK THROUGH**



**BREAK THROUGH**

Which Italian city is known as the birthplace of pizza?

- A) Rome
- B) Naples**
- C) Florence
- D) Palermo

In Sweden, what's trending: more men taking paternity leave or fewer?

- A) More men**
- B) Fewer

Is Italy's female manager percentage (36%) higher or lower than global average?

- A) Higher**
- B) Lower

In Sweden, what percentage of fathers take parental leave each year?

- A) About 20 %
- B) About 45 %**
- C) About 70 %
- D) About 90 %

In Italy, which sector employs the highest share of women?

- A) Health and social care**
- B) Construction
- C) Transport
- D) Energy

In Sweden, which profession has one of the highest proportions of women?

- A) Nursing**
- B) Engineering
- C) IT programming
- D) Architecture

In Italy, which profession has one of the lowest proportions of women?

- A) Teaching
- B) Agriculture
- C) Transport**
- D) Finance

Who is expected to live longer: Swedish women or Italian women?

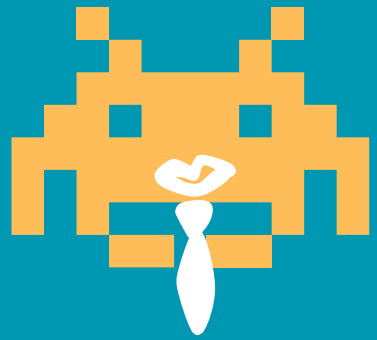
- A) Swedish women**
- B) Italian women

In Sweden, which tradition involves a big coffee break with pastries, often cinnamon buns?

- A) Fika**
- B) Siesta
- C) Hygge
- D) Aperitivo

Which country ranks last in the EU for workplace gender equality per Council of Europe?

- A) Sweden
- B) Italy**
- C) Germany
- D) France



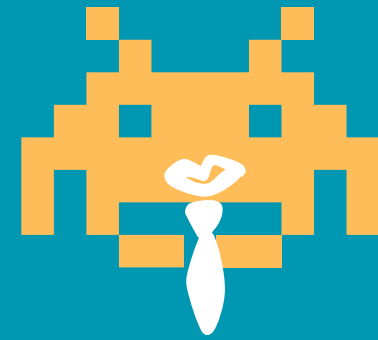
**BREAK THROUGH**



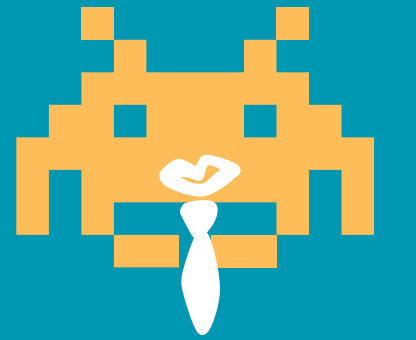
**BREAK THROUGH**



**BREAK THROUGH**



**BREAK THROUGH**



**BREAK THROUGH**



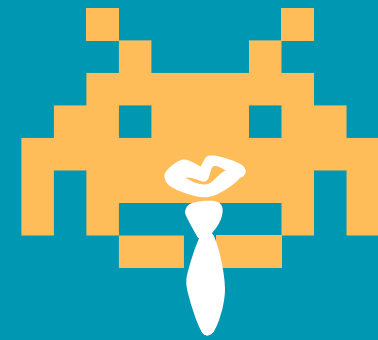
**BREAK THROUGH**



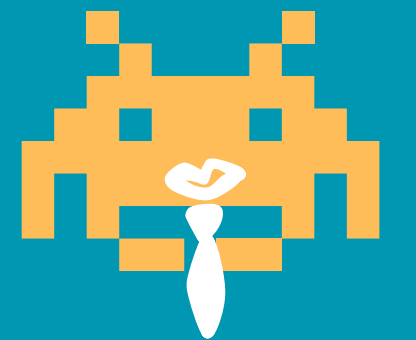
**BREAK THROUGH**



**BREAK THROUGH**



**BREAK THROUGH**



**BREAK THROUGH**

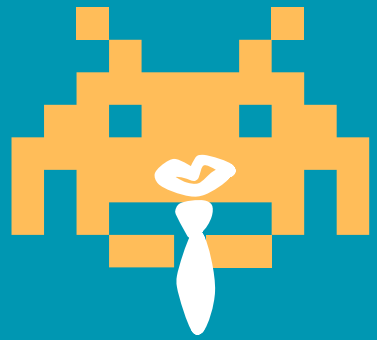
Globally,  
managerial roles  
held by women  
rose to what  
percent in 2024?

- A) 19 %
- B) 25 %
- C) 33.5 %**
- D) 50 %

In Italy, what  
percent of board  
seats in listed  
companies are  
women?

- A) ~31.5 %**
- B) ~50 %
- C) ~20 %
- D) ~40 %





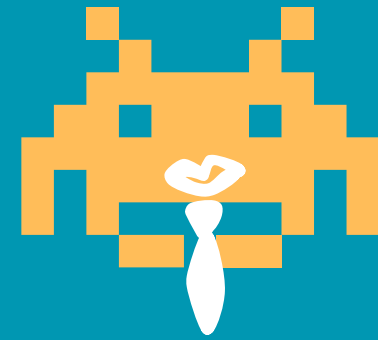
**BREAK THROUGH**



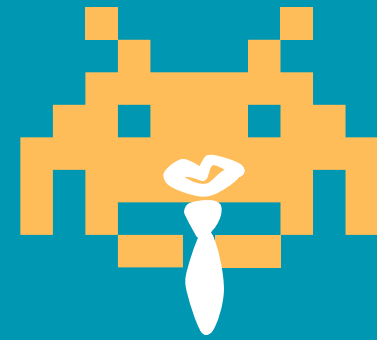
**BREAK THROUGH**



**BREAK THROUGH**



**BREAK THROUGH**



**BREAK THROUGH**



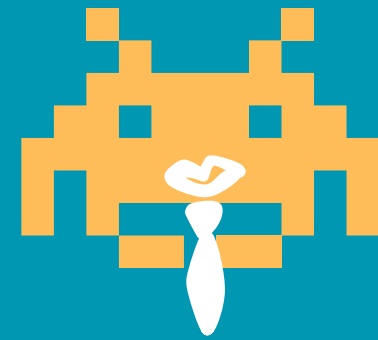
**BREAK THROUGH**



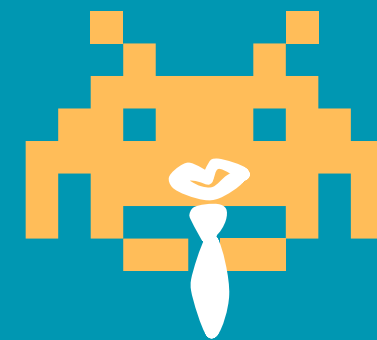
**BREAK THROUGH**



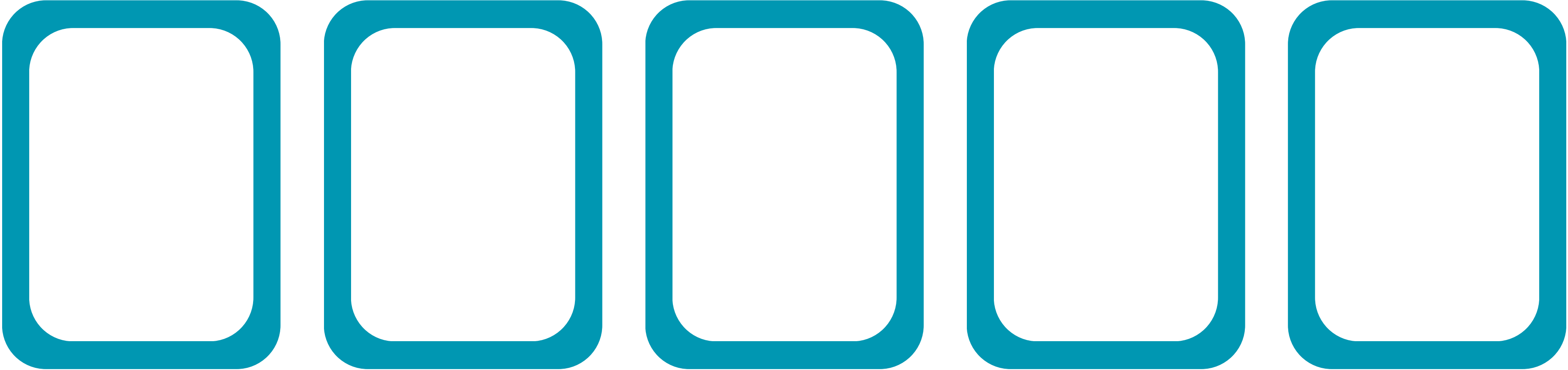
**BREAK THROUGH**

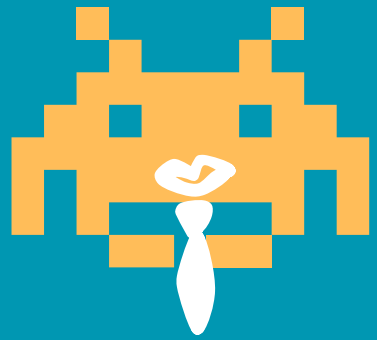


**BREAK THROUGH**



**BREAK THROUGH**





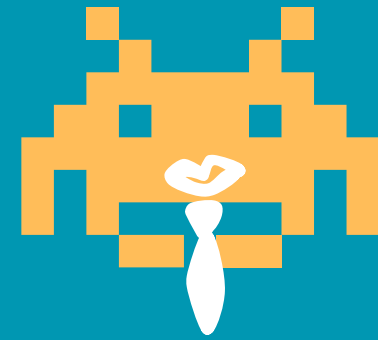
**BREAK THROUGH**



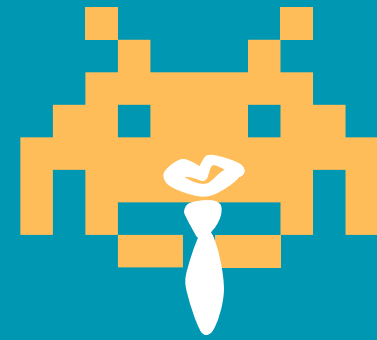
**BREAK THROUGH**



**BREAK THROUGH**



**BREAK THROUGH**



**BREAK THROUGH**



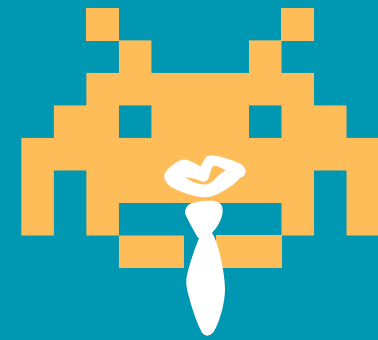
**BREAK THROUGH**



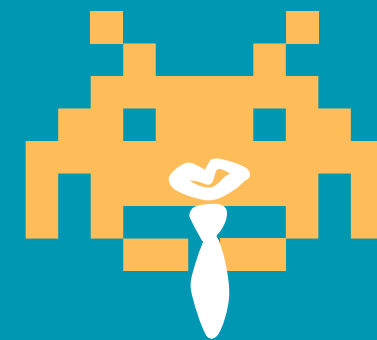
**BREAK THROUGH**



**BREAK THROUGH**



**BREAK THROUGH**



**BREAK THROUGH**